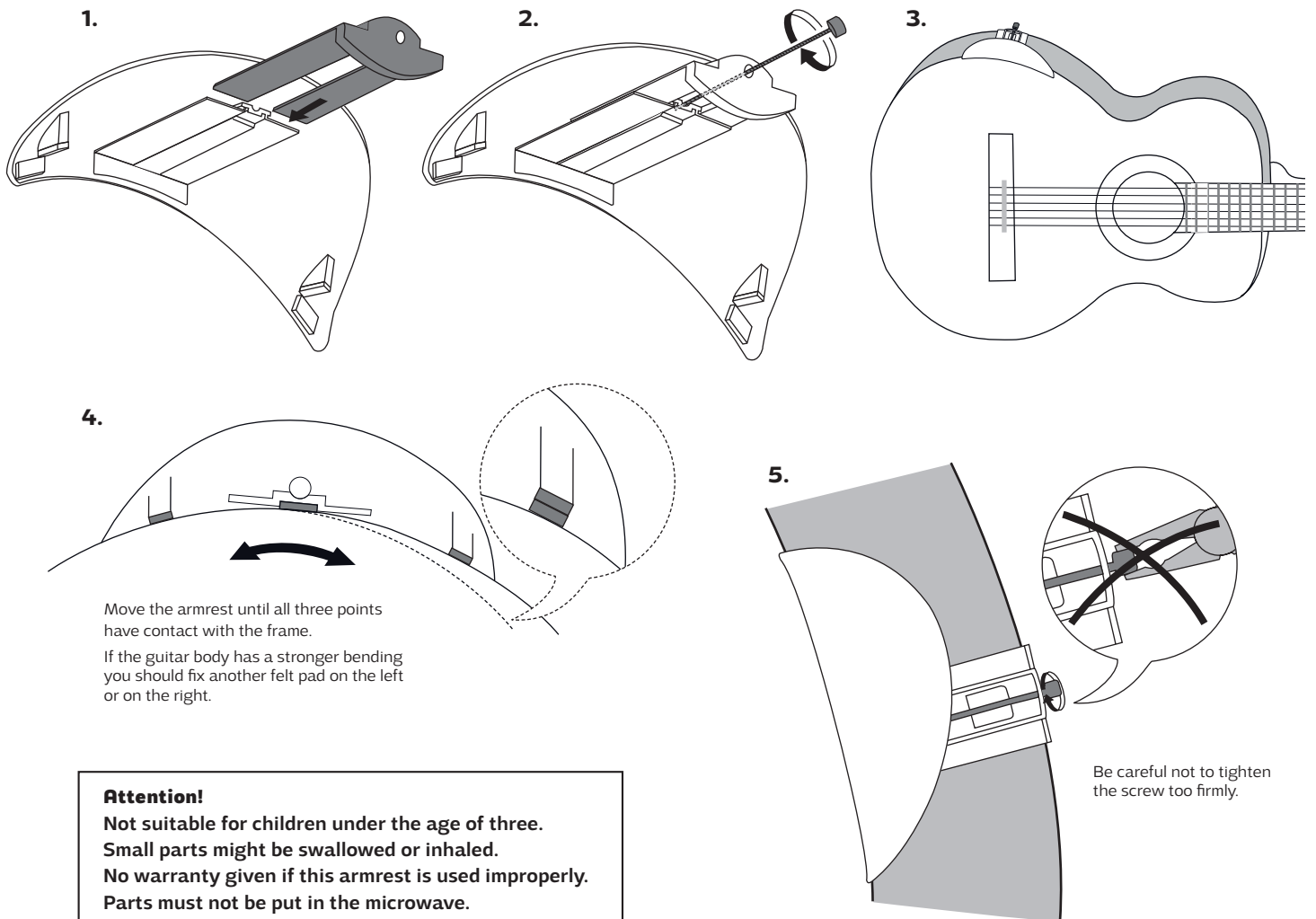


Instruction for the assembly of the armrest



What's new?

- The attachment is only fixed to the upper and the lower edges of the guitar.
- The varnish of the guitar is no longer of any importance (as for the construction of suction cups).
- Neither the upper nor the lower arm touches the guitar.
- The guitar cover can resonate freely.
- The guitar sounds better as the arm neither touches the frame nor the cover of the guitar.
- It is no longer a problem to play in the summer with naked arms (the arm no longer sticks).
As a result of various possibilities of adapting the armrest to the round shape of the guitar, it fits any kind of guitar, even children's guitars.
- It is suited for frames, which are between approximately 9 and 13,5 cm wide, on special request also up to 4 cm (the smaller the frame, the less variable is the range for the adjustment).
- It can easily be fastened to the guitar and taken off again.
- It fits into the guitar case (under the head of the guitar or into the case under the neck).

Questions/contact:

Andreas Abel • Autorstr. 14 • 38102 Braunschweig • phone: +49 (0)531 79 74 90

e-mail: armauflage@a-abel.de • internet: abel-armauflage.com/en/